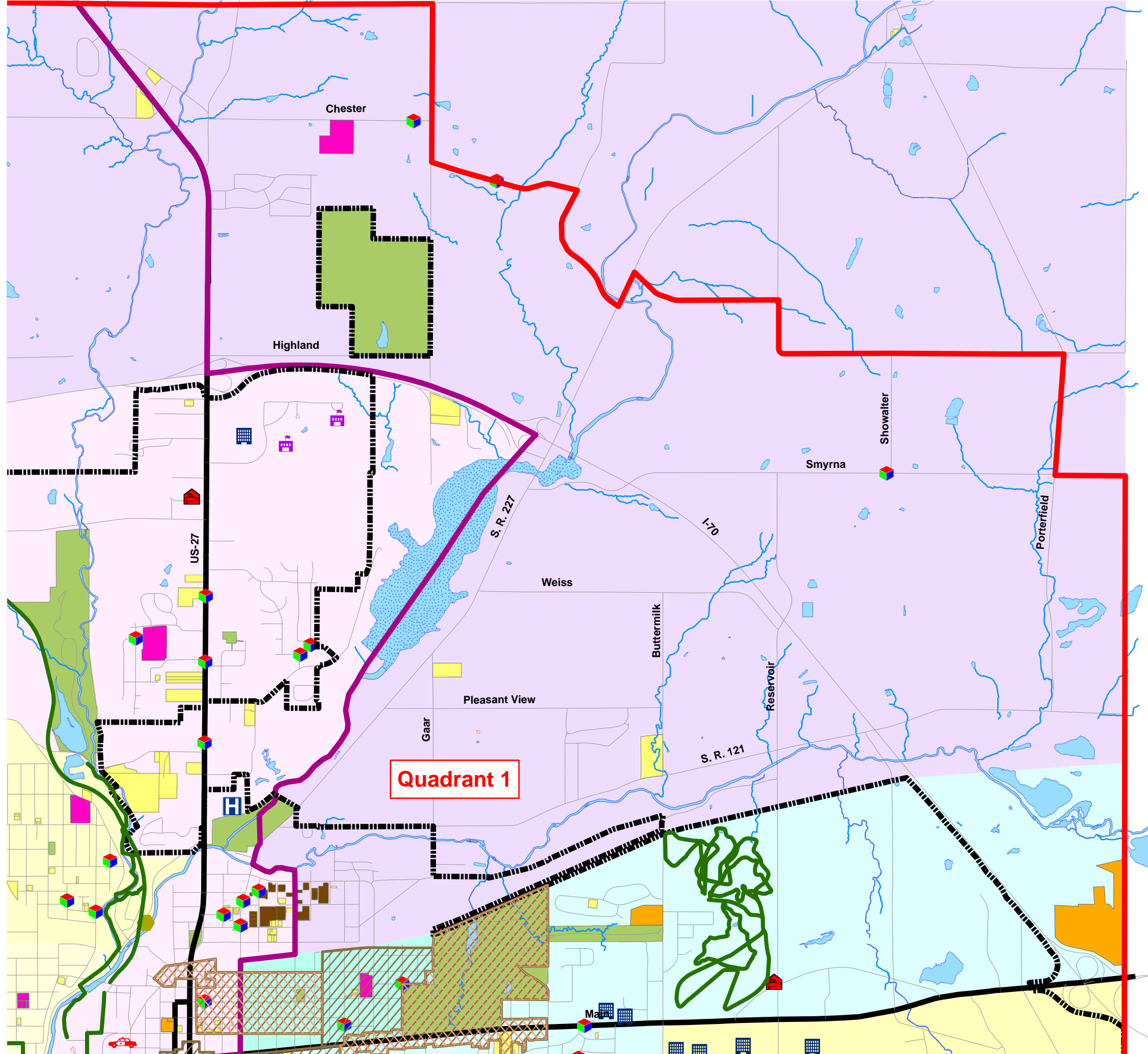


Community

Facilities

Quadrant 1

City of Richmond
Wayne County, IN

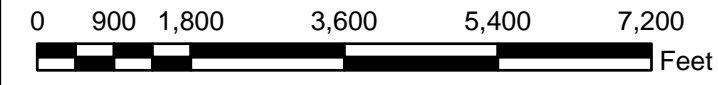
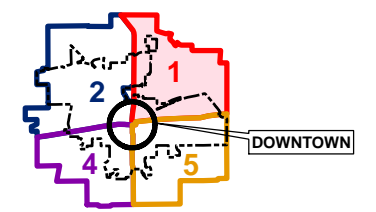


- | | |
|-------------------------|--------------------|
| Colleges | Public Schools |
| Shopping Centers | Private Schools |
| Police Station | Parks |
| Reid Hospital | Trails |
| Rural Metro Ambulance | Churches |
| Wayne County Jail | Public Housing |
| Fire Stations | |
| Daycares | |
| National Registry Sites | Historic Districts |

Elementary School District Areas

- Baxter Elementary School
- Charles Elementary School
- Crestdale Elementary School
- Fairview Elementary School
- Highland Heights Elementary School
- Paul C Garrison Elementary School
- Starr Elementary School

Middle School District Boundary Line:
East of Line = Julia E. Test Middle School
West of Line = David W. Dennis Middle School



Data Sources:
Wayne County/City of Richmond Geographic Information System
Indiana Spatial Data Portal